

WIRELESS SETUP

for the 54 Mbps Wireless DSL Gateway

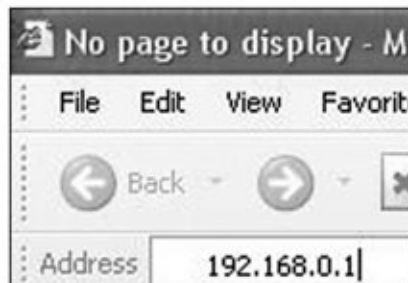
To turn on the wireless radio and activate WPA security on the Actiontec 54 Mbps Wireless DSL Gateway:

STEP 1:

From a computer connected to the Gateway, open a Web browser.

STEP 2:

In the browser's "Address" text box, enter `http://192.168.0.1` then press Enter on the keyboard.



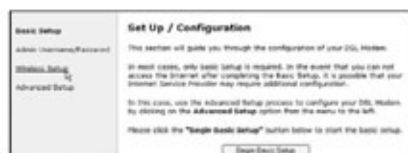
STEP 3:

The "Main Menu" screen appears. Select Setup/Configuration.



STEP 4:

When the "Setup/Configuration" screen appears, select Wireless Setup from the menu on the left side.



STEP 5:

The "Wireless Settings" screen appears. Activate the wireless radio by clicking in the circle next to "On." The ESSID is set to ACTIONTEC by default. If you would like to rename your wireless network, you may do so by changing the ESSID.



STEP 6:

At the bottom of the "Wireless Settings" screen (to the right of "Security"), click the circle next to "WPA" to activate Wi-Fi Protected Access encryption on the Gateway, then click next.



Note: For additional security options, please visit the Help Section of our website: www.usfamily.net

STEP 7:

In the "Wireless WPA Settings" screen, click on the circle next to the where it says "PSK String". Then enter a password into the text box next to PSK String. This will be your wireless network password and needs to be between 8 and 63 characters.



STEP 8:

After creating the password, select Save and Restart from the menu on the left side.



STEP 9:

The "Save and Restart" screen appears. Click the Save and Restart button.



STEP 10:

The "Congratulations" screen appears, and the Gateway restarts itself.



Now that your gateway is set-up to transmit the wireless signal you will want to make sure the wireless card in your computer is setup to communicate with this signal. To do this you will need to properly configure the wireless card settings. For support, please contact the manufacturer of your computer's wireless card.